



DREAMING TREE

3DSVG.COM

PRODUCT DESIGNER/ ART DIRECTOR: RON GUTMAN
ARTIST: DIANA TAM

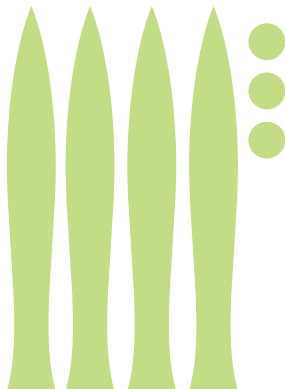
BUTTERCUP FLOWER WITH VASE



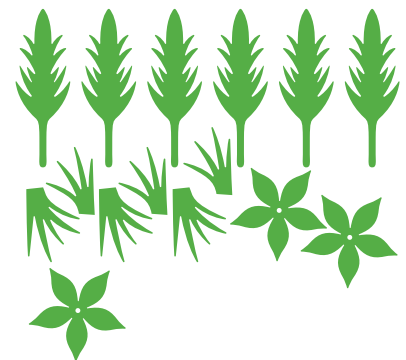
SUPPLIES NEEDED:

- 2 SHEETS OF 12X12 SPINACH CARDSTOCK
- 1 SHEET OF 12X12 MOSS CARDSTOCK
- 1 SHEET OF 8.5X11 SUNFLOWER CARDSTOCK
- 1 SHEET OF 8.5X11 BANANA CARDSTOCK
- 1 SHEET OF 8.5X11 MINT CARDSTOCK
- 1 SHEET OF 12X12 PATTERN PAPER
- ORGANZA RIBBON "OPTIONAL"
- FAUX PEARL STICKERS "OPTIONAL"
- INK "OPTIONAL"
- HIBACHI SKEWERS (3/16 IN. DIAMETER)
- SCULPEY STYLE & DETAIL TOOLS "OPTIONAL"
- PAPER SHRED
- FLORAL TAPE
- HOT GLUE AND GLUE

5.8" WIDE
LEAVES_CENTER_MINT.SVG



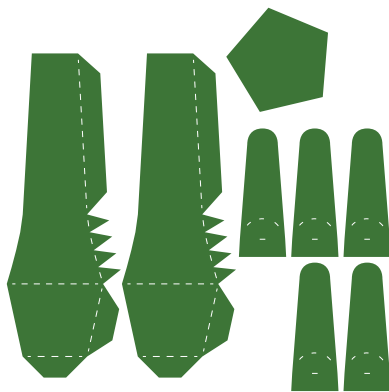
10.9" WIDE
LEAVES_MOSS.SVG



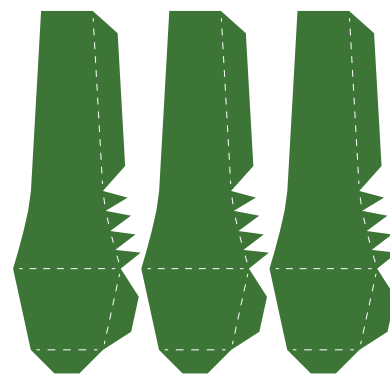
COPYRIGHT 2017 DREAMING TREE. FOR DETAILED HELP AND INSTRUCTIONS USING THESE FILES WITH YOUR CUTTING MACHINE AND/OR SOFTWARE, PLEASE VISIT WWW.3DSVG.COM/HELP - ASSEMBLY VIDEOS ARE LOCATED ON THIS PRODUCT'S PAGE AT WWW.3DSVG.COM



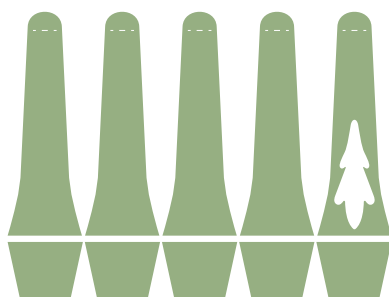
10.4" WIDE
MAIN_1_SPINACH.SVG



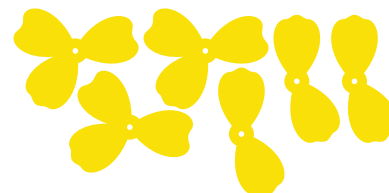
9.3" WIDE
MAIN_2_SPINACH.SVG



11.4" WIDE
PANELS_PATTERN.SVG



9.6" WIDE
PETALS_SUNFLOWER.SVG



3.7" WIDE
STAMENS_BANANA.SVG

